

# National Performance Management Measures

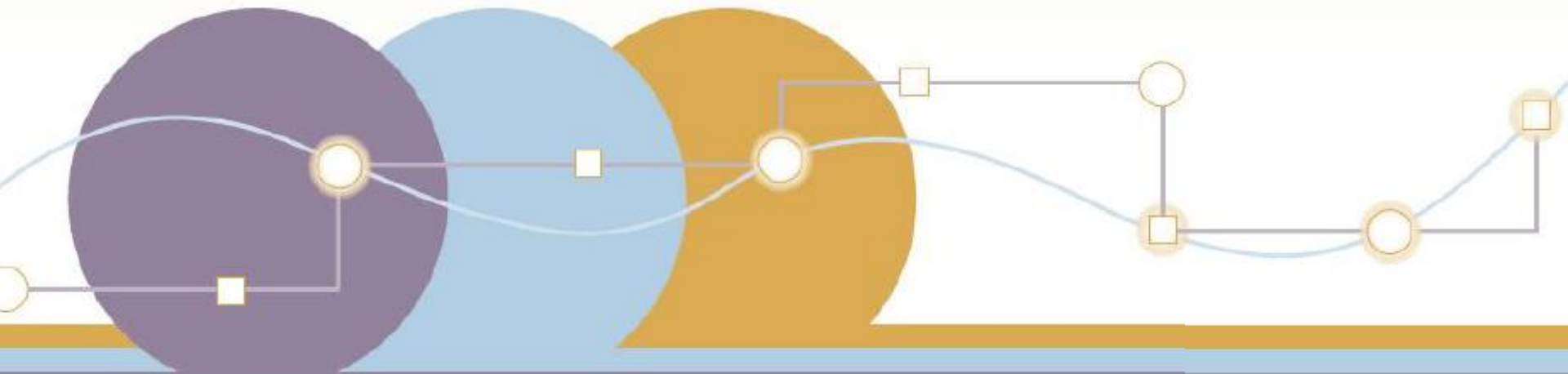
---

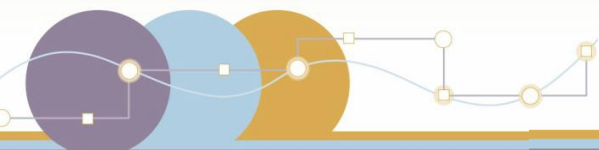
## *Integrating Performance Management Into Existing DOT Planning Processes*

### ***AASHTO SCOPM Conference***

June 19, 2014

Francine Shaw Whitson

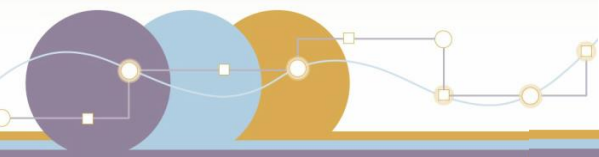




## MAP-21 - STRATEGY AND TARGET DEVELOPMENT PROCESSES

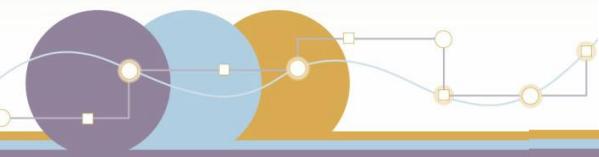
<b>STRATEGY AND TARGET DEVELOPMENT PROCESSES</b> Scenarios/Priorities/Resource Management	<b>Focusing within a Performance Area</b>			
	<b>State/MPO</b>	<b>Asset Management Plan:</b> National Highway System – Risk-Based - required content		
		<b>CMAQ Performance Plan:</b> Tactical document - Project driven – Target setting done by MPO in coordination with State		
		<b>State Freight Plan (optional):</b> Support National Strategic Plan - Set Target – (base funding)		
		<b>Strategic Highway Safety Plan:</b> All public roadways-Strategic document (no projects)-Targets – (base funding)		
	<b>Performance Tradeoffs Determined</b> <b>(Resources, Public concerns, Targets, Measures, etc.)</b>			
	<b>State</b>	<ul style="list-style-type: none"> <li>•Must consider types of modes/coordination during process (Sec. 135 (a &amp; b))</li> <li>•The development of the statewide transportation plan should utilize a performance based planning process that includes performance targets on Safety, CMAQ, Freight(Sec. 135 (d))</li> </ul>	Each State shall establish performance targets (Sec. 150 (c))	20-year Long Range Plan (Sec. 134 (i) & 135 (f))
	<b>MPO</b>	<ul style="list-style-type: none"> <li>•Development process shall include performance based approach &amp; selection of targets that shall be coordinated with the relevant State for consistency (Sec. 134 (h))</li> <li>• Process includes: Identification of transportation facilities, performance measures/ targets, mitigation activities, financial plan, asset mgmt. strategies, etc. (Sec. 134 (i-j))</li> <li>•MPO's must include measures for targets in Long Range Plan w/ updates every 4/5 yrs</li> </ul>	Must establish targets no later than 180 days after State (Sec. 134 (h))	
	<b>Results: Goals/targets that focus across performance areas (Sec. 135 (a) &amp; 134 (c))</b>			





## *MAP-21 – Putting the Pieces Together*

- National Goal Areas
- Strategy and Target Development Processes
- Program Development
- Accountability/Reporting



## **MAP-21 - NATIONAL GOAL AREAS**

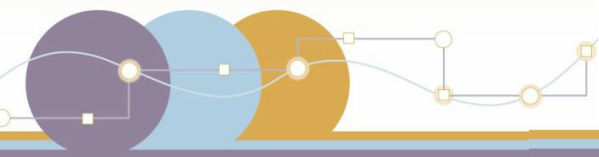
**Putting the Pieces Together - Moving Ahead for Progress in the 21<sup>st</sup> Century**

US DOT/  
FHWA

### **National Goals:**

- Safety
- Infrastructure Condition
- Congestion Reduction
- Reduce Project Delivery Delays
- System Reliability, Freight Movement
- Environmental Sustainability.

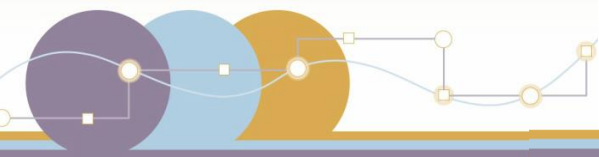




## MAP-21 - PROGRAM DEVELOPMENT

<b>PROGRAM DEVELOPMENT</b> Target commitment	<b>State/MPO</b>	<b>STIP/TIP Development with Targets</b>						<b>4-year range</b> <b>(Sec. 134 (i) &amp; 135 (g))</b>
		Safety	IS/NHS Pavement Condition	IS/NHS Bridge Condition	IS/NHS Performance	Congestion/ Emissions	Freight	
		<b>Investments to Achieve Targets Outlined in STIP/TIP</b>						
		A statewide transportation improvement program shall include, to the maximum extent practicable, a discussion of the anticipated effectiveness of the plan towards achieving the performance targets established in the statewide transportation plan, linking investment priorities to those performance targets. (Sec. 135 (g))						
		US DOT/ FHWA	Secretary shall certify that the planning process of MPO serving a TMA is being carried out in accordance with applicable provisions (Sec. 134 (k))					

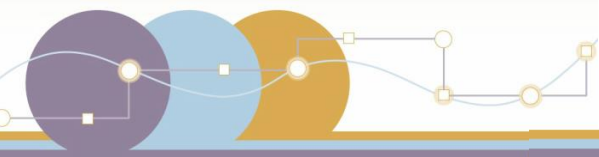




## MAP-21 - ACCOUNTABILITY/REPORTING

<b>ACCOUNTABILITY/REPORTING</b> Action/Results Analysis	<b>State/MPO</b>	<b>Design and Construct Projects/Carry out Strategies</b>
		Evaluate plan performance: Do program and delivered projects support performance, budget and quality targets, and does investment commitment achieve desired outcomes and provide for continual improvement?
	<b>States Report on Performance</b>	
	DOT/FHWA will assess the biennial report that States shall submit showing their progress towards achieving targets. (Sec. 150 (e))	
<b>US DOT/FHWA</b>	<b>DOT Secretary Reports to Congress on Performance</b>	
	Not later than 5 years after enactment of MAP- 21, the Secretary will submit a report to Congress evaluating the overall effectiveness of performance based planning, progress towards achieving national performance goals, technical capacity, as well as other State/MPO results. (Sec. 134 (l) & 135 (h))	





thank  
you!

**Francine Shaw Whitson**  
Leader, *TPM Programs*  
*FHWA, Office of Transportation*  
*Performance Management*  
[fswhitson@dot.gov](mailto:fswhitson@dot.gov)  
(202) 366-8028

**Questions?**

